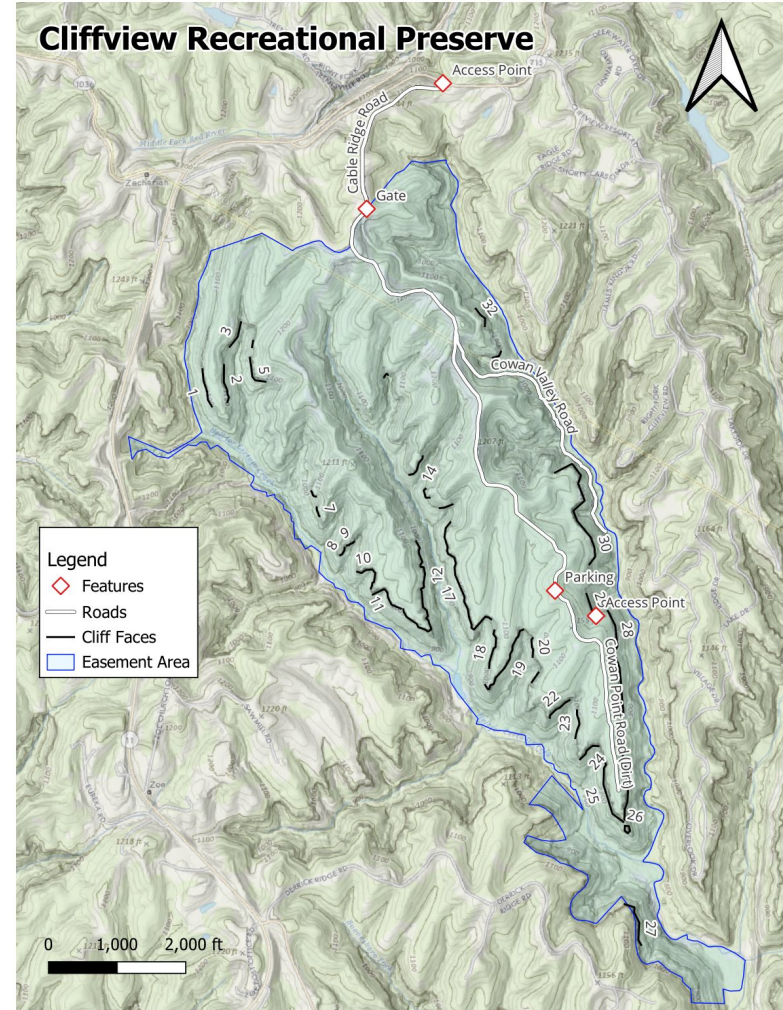




CRP-Developers' Information Call

August 6, 2024





Agenda

- Introductions
- Developer Access
- Route Development and Reporting
- Hardware
- Developer Coordination
- Questions and Answers



Introductions

- Jereme Ransick, Access and Acquisition Committee Chair
- Michael Hargis, Access and Acquisition Committee Member
- Mike Bond, Access and Acquisition Committee Member



Access

- History and Scope of the Easement
- Tools:
 - PDF/PNG Maps
 - Online Maps (Google/RRGCC)
 - Offline Maps (Avenza)
- Protecting Access
 - Using only allowed access points
 - No access from or to Cliffview or any cliff outside the easement
 - Respect the neighboring homes and businesses
 - Completing all required document for you and your assistants



Developer Access Process

1. Complete Forms
 - RRGCC Climbing Waiver
 - RRGCC Developer MOU
 - CRP Supplementation
2. Notify of Intent to Develop
 - Basic email of intent to crp@rrgcc.org
 - Send additional email(s) of rough location of planned development
3. RRGCC will review and send email with the gate code

Reminders / Thoughts

- Do not access the CRP if you have not completed all three steps, including response from RRGCC.
- All visitors must complete all of these items.
- Complete the forms before contacting Jonny Neville for hardware.
- Consider scouting out routes & the property before getting hardware.
- Do not share the gate code.



Route Development and Reporting

- Positively verify the cliff is within the easement
 - Using RRGCC provided maps and tools
 - Uncertain? contact CRP@rrgcc.org
- Email your intent to develop a specific route and cliff:
 - CRP@rrgcc.org
 - Cliff number, description, and picture
- Commence the hard work!
- Complete the CRP New Route Submission Form
- Redtag until sent/open.
- Do not publish any CRP route info:
 - Not on Mountainproject, Redriverclimbing, 8a, etc.
 - Not until the RRGCC notifies you that the CRP is being opened to the public and publication is allowed.



Access from Cable Ridge Road

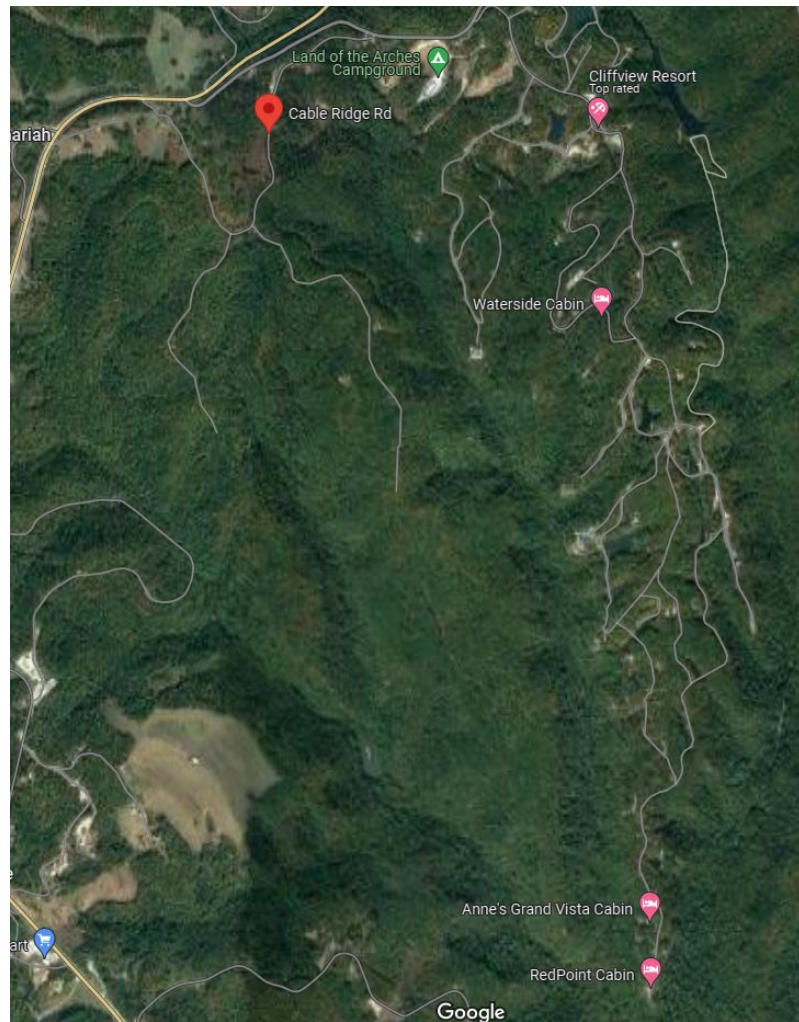
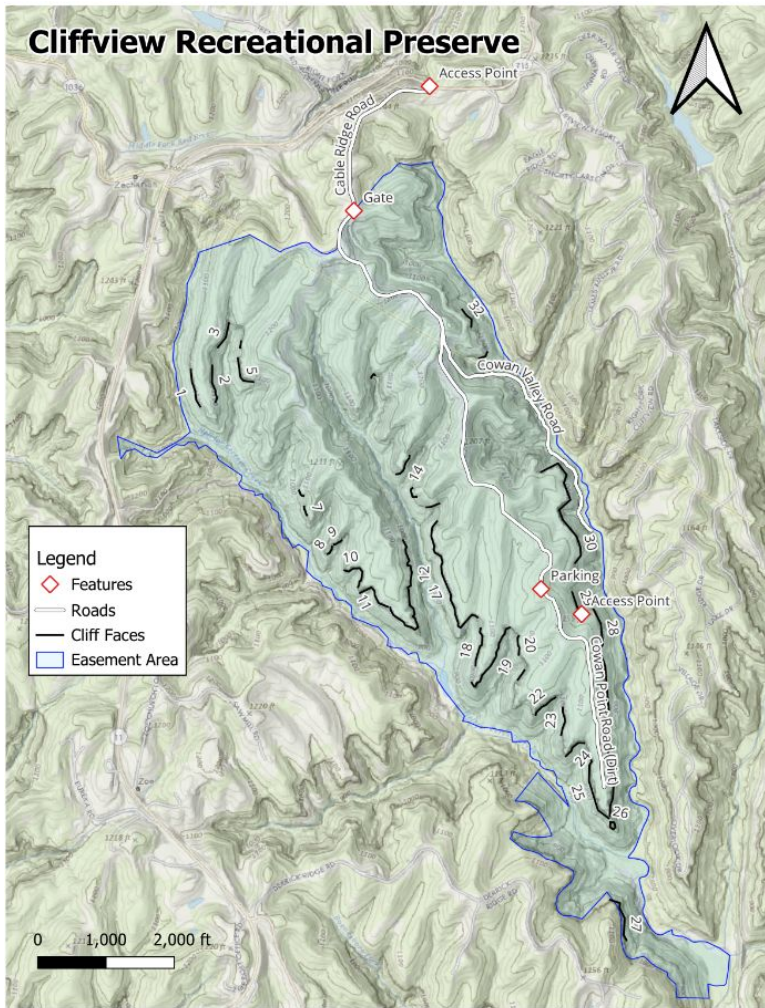




Gate on Cable Ridge Road



Cliffview Recreational Preserve





Hardware

- Free Hardware provided by Cliffview Resort & Lodge
 - Wave Bolts, AC100, SS-Chain, Mussies and limited number of 5 Piece Bolts and Cleaning Permas
- Available to fully onboarded developers
- Two (2) route at a time quantities
 - ≤ 20 Bolts + 4 anchors
 - ≤ 2 AC100 cartridges
 - ≤ 4 extra glue nozzles
 - ≤ 4 Mussies
 - ≤ 4 precut chains
 - ≤ 8 quicklinks
- Re-supply requirements
- Option to use self-supplied hardware
 - Bolts/Hangers must be Stainless
 - Glue-in or 5 Piece; No wedge bolts



Developer Coordination

- Only Temporary Developer Trails Allowed
 - Minimize size and impact
 - Utilize the excellent existing bike trail for hiking but do not modify it
- Respect Other Developers
 - Fixed Ropes
 - Redtags
- Minimize the Number of Partially Completed Routes
 - The goal is to have a large quantity of high quality route created in a relatively short amount of time.
- Self organization
 - RRGCC is not controlling development or developers
 - Encourage you to coordinate as a community as you see fit
 - Experienced Developers can mentor motivated individuals who want to assist.



Questions and Answers

-